



## 6" x 4.5" Ultra-Slim Graphic Tablet



Model: CyberTablet Z8

# QuickGuide

English

www.adesso.com

### LIMITED WARRANTY

ADESSO provides one year limited warranty for the quality of all its products in materials and workmanship.

During this period, ADESSO will repair or replace all merchandise, which proved to be defective. However, ADESSO will not warranty any product which has been subjected to improper freight Handling, shipping abuse, neglect or unauthorized repair or installation. The warranty also will not cover products installed with Non-ADESSO components and product with broken sealed and assembly trace. After replacement of RMA, ADESSO reserves the right to request the total cost of the replacement products with broken seals or assembly trace.

If you discover a defect, Adesso will, at its option, repair or replace the product at no charge to you, provided you return it during the warranty period with transportation charges pre-paid to Adesso. You must contact Adesso at support@adesso.com for a Return Merchandise Authorization number (RMA) prior to returning any product. For each product returned for warranty service, please include your name, shipping address (no P.O. Box), telephone number, copy of the bill of sale as proof of purchase and have the package clearly marked with your RMA number.

### SUPPORT

We have listed most of our FAQ's (Frequently Asked Questions) at: <http://www.adesso.com/faqs.asp>. Please visit our FAQ Service & Support pages before you contact our E-mail or Telephone Support.

**Email Support:** If our FAQ's do not help you resolve your issues, please email [support@adesso.com](mailto:support@adesso.com)

**Telephone Support:**  
Toll Free: (800) 795-6788  
9:00AM to 5:00PM PST Monday - Friday

### INTRODUCTION

The Adesso CyberTablet Z8 is a compact ultra-slim graphic Tablet that offers both PC and Mac users advanced cursor control, greater productivity and higher efficiency. The CyberTablet Z8 offers a resolution of 2048 lpi, 1,024 pressure sensitivity levels and a sizeable working area of 6" x 4.5" to easily create complex drawings with minimal hand strain. The CyberTablet Z8 ultra-slim design makes navigating your cursor or drawing smooth and comfortable and its flexible design prevents damage. Its compact size requires minimal desk space and makes travel simple, it is the perfect companion for both laptops and notebooks. The CyberTablet Z8 is ideal for document annotation, free hand illustrations, graphic design and for overall cursor control. The CyberTablet Z8 also includes bundled software so you can draw, paint and edit photos. Work like a pro and discover all the benefits the CyberTablet Z8 has to offer today!

### SPECIFICATIONS

- Resolution: 2048 Lines/ Inch
- Pressure Level: 1024 Levels
- Reading Height: 7.0mm Max.
- Tablet Active area: 6 x 4.5" (152 x 114 mm)
- Tablet: 5V USB Vbus
- Tablet Power Consumption: 60mA (Max)
- Digital Pen Power: (1) AAA Battery
- Tablet Dimensions: 7.5 x 7.7 x 0.3" (191 x 196 x 8 mm)

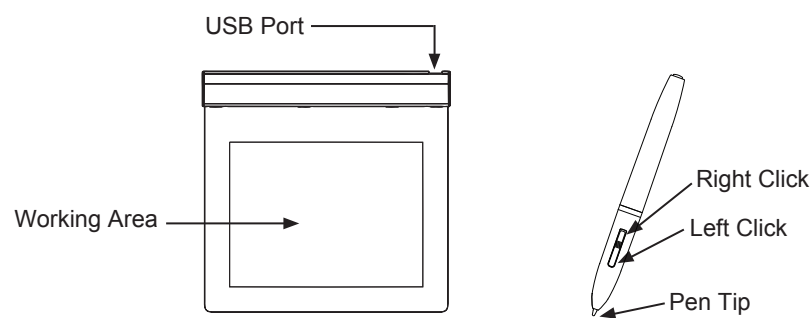
### REQUIREMENTS

- Operating system: Windows 7/ Vista/ XP or Intel Mac OS X 10.4 and above
- Available USB Port
- CD-ROM Drive

### PACKAGE CONTENTS

- |                      |                      |
|----------------------|----------------------|
| (1)  Tablet x 1      | (4)  CD x 1          |
| (2)  Digital Pen x 1 | (5)  USB Cable x 1   |
| (3)  AAA Battery x 1 | (6)  Quick Guide x 1 |

### DESCRIPTION



### BATTERY INSTALLATION

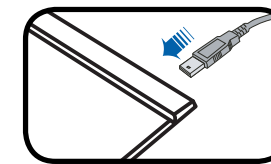
1. Twist and open the pen cap
2. Remove the cap and insert the AAA battery
3. Return the cap to pen barrel

#### Storing the Digital Pen properly

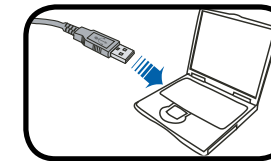
To store the Digital Pen, make sure that the tip does not touch anything, especially if the pen is in a cup holder with the tip down. Pressure applied to the pen tip will cause a constant drain on the pen's battery. It is recommended to place the pen in a pen holder or store it with the pen tip pointing upward, or place it horizontally with the pen tip free of any other objects.

### TABLET INSTALLATION

1. Connect the enclosed USB cable to Z8 tablet.



2. Plug the other end of USB cable to the USB port of your computer.



3. Insert the enclosed CD into the CD-ROM drive of your computer. The installation menu will pop up automatically (click **setup.exe** file in CD contents if installation menu does not run automatically).

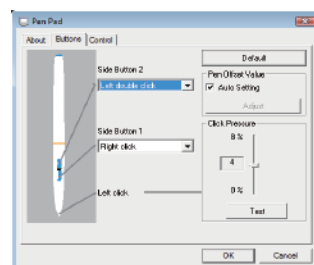
4. Click the **CyberTablet Driver** and follow the on screen procedure to complete installation. After the driver is installed, please restart your computer. Your Z8 tablet is ready used now.

### TABLET DRIVER

For the following advance settings of digital pen, click the ( ) icon on the bottom right corner of toolbar located on desktop.

1. **Calibration** (Tab "About", then click "Calibration")  
Please run this if the screen cursor does not align pen tip correctly.
2. **Assignment of Side Button** (Tab "Buttons", then click "Side Button")  
Select different button actions to customize the side button 1 & 2.

Default settings  
Side Button 1 = right click  
Side Button 2 = left click  
Pen Point = left click



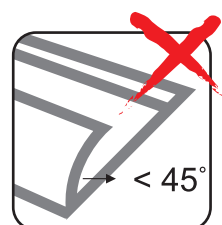
3. **Click Pressure** (Tab "Buttons", then slide up & down to adjust)  
Pen pressure can be between 0% and 8%; 0% is the lightest, and 8% is the heaviest.
4. **Test** (Tab "Buttons", then click "Test")  
Launch "Click Pressure Test" to test whether the pen pressure function works or not.
5. **Function Key** (Not available for this model)

### NOTE

It is important to take care of your Z8 tablet to keep it in good shape; prevention is always better than cure. The following tips will help to ensure that it can last longer with less maintenance.

1. Make sure your digital pen work on the active area.
2. Keep objects made by metal material away from Z8 tablet.
3. Keep liquid away from Z8 tablet.
4. Make sure that there is no sharp object scratch the working area except the tip of digital pen.
5. Recommended storage temperature between 5°C and 35°C.
6. Do not fold or roll Z8 tablet.

### CAUTION



DO NOT FOLD



DO NOT ROLL

### Frequently Asked Question

**Question: The tablet does not work. What can I do?**

**Answer: Please follow these steps below:**

1. Pull out the tablet's USB plug from the computer.
2. Remove the CyberTablet Driver from the system.
3. Re-connect the Tablet's USB to the computer.
  - 3.1 Test your wireless digital pen on the tablet's working area, if it can work as a mouse, the hardware is OK. If it doesn't work, please change the battery.
  - 3.2 After you have changed the battery of the pen and it still not working, this means the hardware is faulty.
4. You can download the latest version of driver directly from our website.
5. After installing the new version of driver, the system will require you to restart your computer.
6. After restart your computer, on bottom right of the toolbar, you will see the tablet icon ( ).
  - 6.1 If you can't find the tablet icon ( ) on the bottom right of the screen, it means the driver failed in startup. It might be caused by an incompatible hardware or software issue.
  - 6.2 Check from [My Computer] ► [Properties] ► [Hardware] ► [Device Manager], if there is an exclamation mark, it means that the installed driver of the tablet is incompatible with the Windows system. If you have this problem, please contact us for more information.
7. By clicking the tablet icon ( ) on the bottom right of the screen, you can test the pressure sensitivity to see whether the pen pressure function works or not.  
(Please read the e-manual on the included CD for CyberTablet configuration details).  
**Note: If you do not have pen pressure, it means the pen might be faulty.**  
**Please contact Adesso Tech Support.**