



iMouse M300 Bluetooth® 3.0 Mouse



Model: iMouse M300

QuickGuide English

www.adesso.com

1

LIMITED WARRANTY

Adesso provides a one year limited warranty for all of its products against defects in material and workmanship.

During this period, Adesso will repair or replace any product which proves to be defective. However, Adesso will not warranty any product which has been subject to improper freight handling, shipping abuse, neglect, improper installation or unauthorized repair. The warranty will not cover products installed with components not approved by Adesso and products where the sealed assembly trace has been broken.

If you discover a defect, Adesso will, at its option, repair or replace the product at no charge to you provided you return it during the warranty period with freight charges pre-paid to Adesso. Before returning any product, you must obtain a Return Merchandise Authorization number (RMA). This RMA # must be clearly marked on the outside of the package you are returning for warranty service. Be certain to also include your name, shipping address (no PO Boxes), telephone number, and a copy of the invoice showing proof of purchase in the package.

SUPPORT

We have listed most of our FAQ's (Frequently Asked Questions) at: <http://www.adesso.com/faqs.asp>. Please visit our FAQ Service & Support pages before you contact our E-mail or Telephone Support.

Email Support: If our FAQ's do not help you resolve your issues, please email support@adesso.com

Telephone Support:
Toll Free: (800) 795-6788
9:00AM to 5:00PM PST Monday - Friday

2

INTRODUCTION

The Adesso iMouse M300 equipped with Bluetooth wireless technology lets you work freely for up to 30 feet, at any angle, and without wire constraints. The slim and elegant design provides convenience and mobility, and allows you to navigate quickly and easily with the convenient scroll wheel. It also features an optical sensor to work on virtually any surfaces with improved speed, accuracy and reliability, without the hassle of a clogged mouse ball.

SPECIFICATIONS

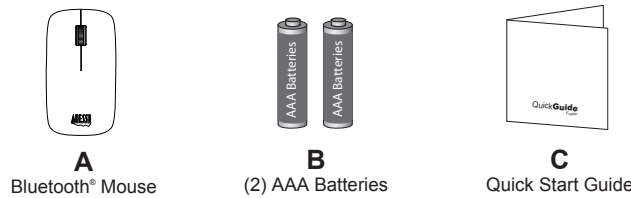
- Tracking Method: Optical Sensor
- Connectivity: Bluetooth® 3.0 Wireless Technology with backward compatibility (2.1, 2.0 & 1.1)
- Wireless Range: Up to 30 ft. (10m)
- DPI Resolution: 1000
- Features: Scroll Wheel, Auto Sleep Mode and Power Switch,
- Indicator: Low Battery
- Hand Orientation: Left/ Right
- Power: (2) AAA Batteries (included)
- Mouse Dimension: 4.3"x2.3"x1" (111x60x28mm)

REQUIREMENTS

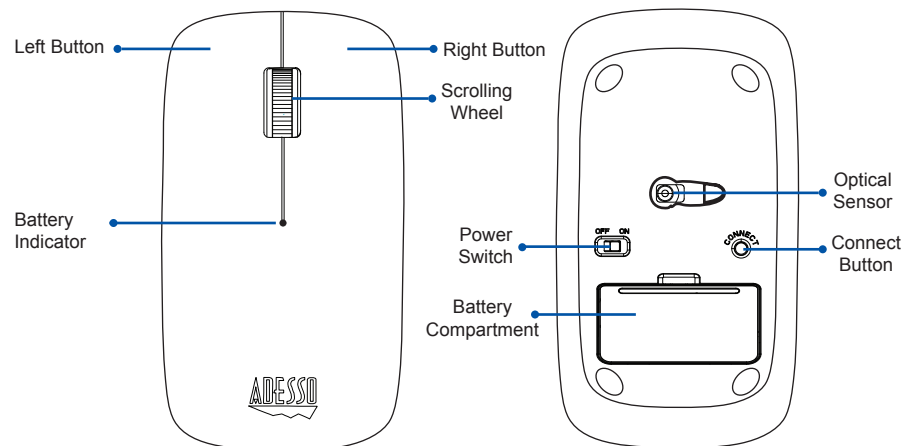
- Operating System: Windows® 8, 7, Vista, & XP
Mac® OS X 10.4 and above
- Connectivity Technology: Bluetooth® 3.0, 2.1, 2.0 & 1.1

3

CONTENTS



DESCRIPTION



4

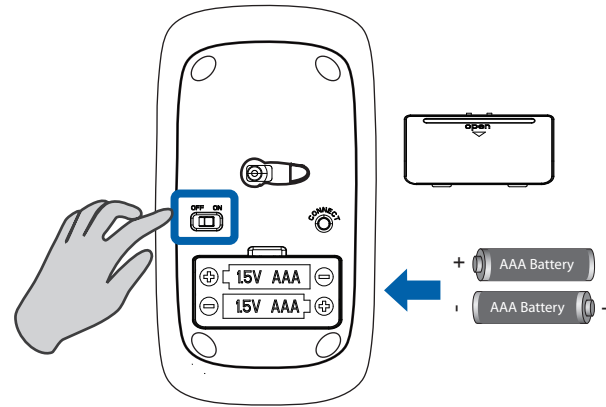
INSTALLATION

For Windows Users



Note: For first time setup, a wired mouse will be required to navigate and control during the installation process.

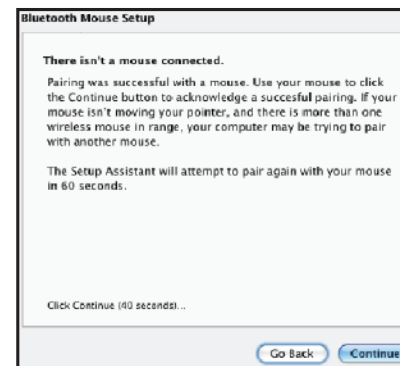
1. Insert (2) AAA batteries into the mouse and turn the power switch to **ON**.



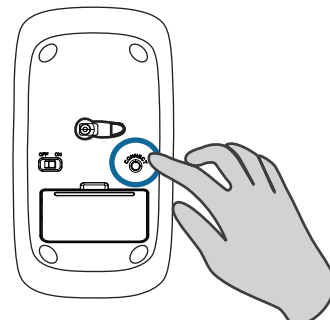
5

2. Turn **ON** your computer and let your computer load completely.

3. Turn Mac power **ON**. Once system completes loading, the wizard for Bluetooth Mouse will come up.

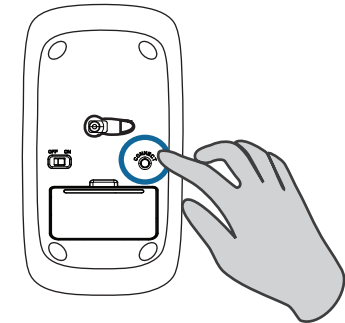


4. Press **CONNECT** button on Adesso Bluetooth Mouse. System will detect mouse and display confirmation message if the connection is successfully established. The Bluetooth Mouse is ready for use now.



8

3. Press **CONNECT** button on Adesso Bluetooth Mouse to make it discoverable.



4. Click the **Start** button , click **Control Panel**, click **Hardware and Sound**, and then click **Add a Bluetooth Device**.

5. Select **Adesso Bluetooth 3.0 Mouse** and click **Next**.



6. Wait for Windows install the driver. The Bluetooth mouse is ready for use now.

6

TIPS:

- We suggest to turn "**OFF**" the mouse when leaving your desk for more than an hour to save battery life for longer lasting use.
- Bluetooth wireless range is up to 30 ft (10 m).

TROUBLESHOOTING

If Bluetooth mouse cannot be operated, please try the following:

1. Make sure batteries have enough power and been inserted into the battery compartment correctly. Switch the device to **ON**.
2. Make sure Bluetooth on your computer turn **ON**.
3. Press **CONNECT** once on the bottom of the mouse. (refers page 5 to 8)

Note: Wireless phone, routers and other devices that uses 2.4GHz frequency might cause interference with Bluetooth device. Please relocate such wireless appliances away from the Bluetooth device.

9

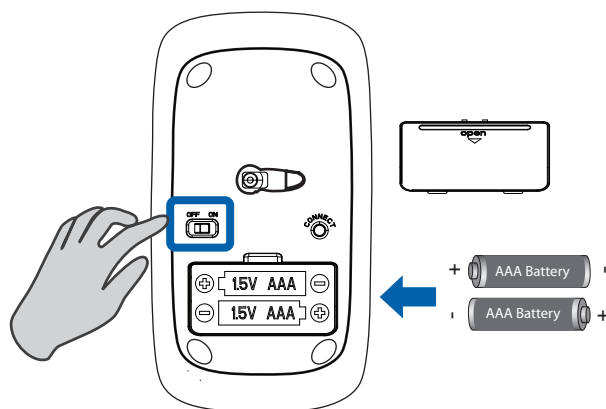
For Mac Users



Note: For first time setup, ensure Mac Bluetooth connection is **ON**. To verify Bluetooth connection is active go to "**System Preferences**" click the Bluetooth icon and make sure you see "**Bluetooth: On**" under the "**Settings**" tab. If it's not turned on, click "**Turn Bluetooth On**".

1. Shut down Mac, unplug and/or deactivate all connected mice.

2. Insert (2) AAA batteries into the mouse and turn the power switch to **ON**.



7