



Compagno™ Air

Bluetooth® 3.0 Scissor-Switch Keyboard and Folio Case



Model: WKB-1020DB

QuickGuide

English

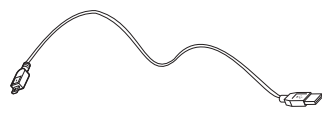
www.adesso.com

①

CONTENTS



A
Keyboard and Case

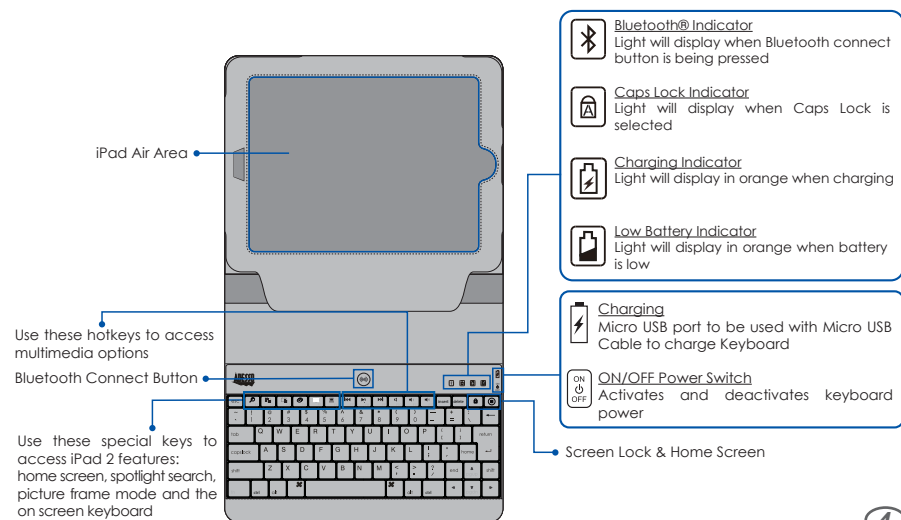


B
Micro USB Cable



C
Quick Start Guide

DESCRIPTION



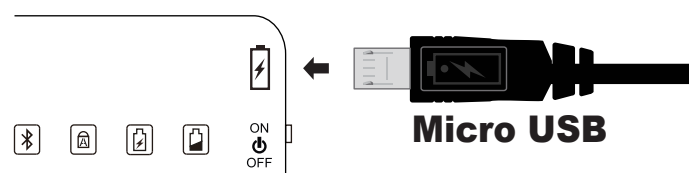
④

CHARGING BATTERY

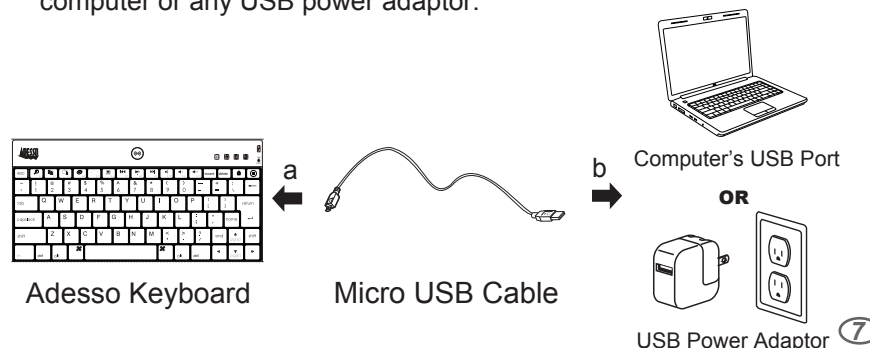
Charge keyboard battery using computer USB port or any USB power adaptor (i.e. iPad charger):

- Insert the Micro USB Charging Cable Connector into the keyboard micro USB charging port, located on right side of keyboard.

Note: Insert Micro USB Cable with battery charging symbol facing up, as shown below.



- Insert the USB end of the Micro USB Cable into the USB port of your computer or any USB power adaptor.



⑦

LIMITED WARRANTY

Adesso provides a one year limited warranty for all of its products against defects in material and workmanship.

During this period, Adesso will repair or replace any product which proves to be defective. However, Adesso will not warranty any product which has been subject to improper freight handling, shipping abuse, neglect, improper installation or unauthorized repair. The warranty will not cover products installed with components not approved by Adesso and products where the sealed assembly trace has been broken.

If you discover a defect, Adesso will, at its option, repair or replace the product at no charge to you provided you return it during the warranty period with freight charges pre-paid to Adesso. Before returning any product, you must obtain a Return Merchandise Authorization number (RMA). This RMA # must be clearly marked on the outside of the package you are returning for warranty service. Be certain to also include your name, shipping address (no PO Boxes), telephone number, and a copy of the invoice showing proof of purchase in the package.

SUPPORT

We have listed most of our FAQ's (Frequently Asked Questions) at: <http://www.adesso.com/faqs.asp>. Please visit our FAQ Service & Support pages before you contact our E-mail or Telephone Support.

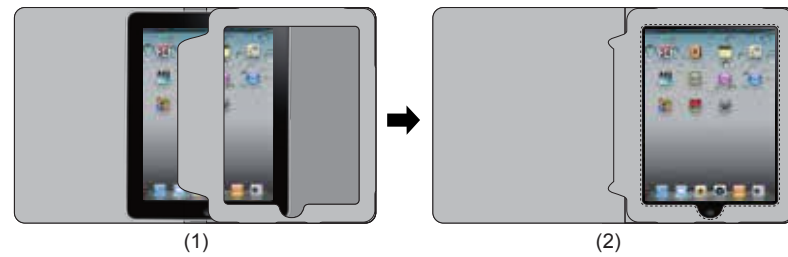
Email Support: If our FAQ's do not help you resolve your issues, please email support@adesso.com

Telephone Support:
Toll Free: (800) 795-6788
9:00AM to 5:00PM PST Monday - Friday

②

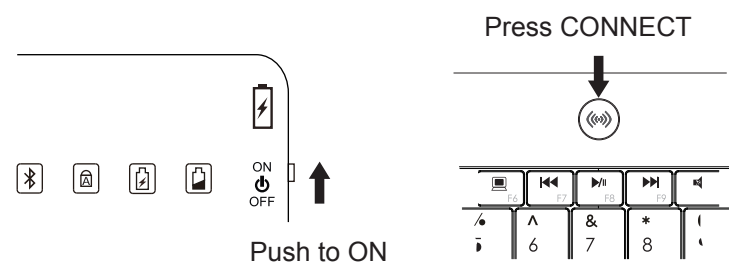
INSTALLATION

- Open and insert your iPad Air into the case as shown below.
- Fold flap behind iPad Air screen to secure iPad in place.



BLUETOOTH CONNECTION SETUP

- Turn **ON** your iPad Air and set Adesso Keyboard Power Switch to **ON**.
- Press **CONNECT** button on Adesso Keyboard to make Bluetooth® signal discoverable.



⑤

INTRODUCTION

The Adesso® Compagno™ Air Bluetooth® 3.0 Scissor-Switch Keyboard and Case are the perfect companions for your iPad Air™. This ultra-slim and stylish detachable Bluetooth® 3.0 keyboard includes a standard layout with iPad™ and Multimedia Hotkeys, to access iPad Air™ shortcuts with one-touch. The keyboard's scissor-switch keys provide the same great tactile feel as a laptop and a fast, almost silent key response. The portable stylish hi-tech micro fiber leather folio encases your keyboard to protect your iPad Air™ from the unexpected. This case not only protects, but it also provides multiple viewing angles for easier typing, Internet browsing, and video viewing. The Compagno™ Air case design converts into a stand-alone iPad case, gives your two iPad Air™ cameras full visibility and includes a magnetic closure that automatically wakes and sleeps both your iPad™ and Bluetooth® keyboard when you open or close the case.

SPECIFICATIONS

- Keyboard: 64-Key US Layout
- Wireless Technology: Bluetooth® 3.0
- Working Range: 30 feet (10M)
- Battery: Built-in Li-ion Polymer Rechargeable Battery
- Battery Life: Up to 100 hours (continuous use) / Up to 30 days (standby mode)
- Dimensions: 9.75" x 8.0" x 1.0" (248 x 204 x 25mm)
- Combined Weight: 1.3 Lbs (590g)
- Case: Micro Fiber Leather

REQUIREMENTS

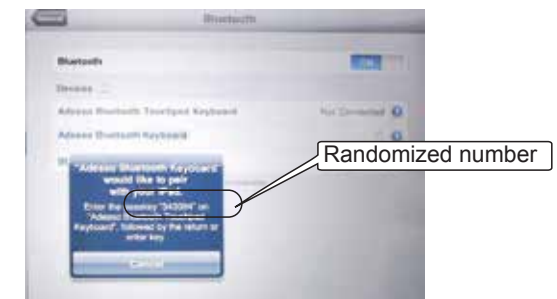
- Bluetooth® 3.0, 2.1, 2.0 & 1.1 wireless technology

③

- Select iPad **Settings**, then **General** and **Bluetooth** option, slide the iPad Bluetooth toggle to **ON**. After a few seconds **Adesso Bluetooth Keyboard** will appear in list of Bluetooth devices, select keyboard.



- A screen will show asking to pair Adesso Bluetooth keyboard, using Adesso Keyboard enter the **randomized passkey** provided on screen and press return. Upon completion, your iPad screen will show the keyboard connected and will be ready for use.



⑥

NOTE:

- The Charging Indicator will turn orange during the charging period and then green once keyboard is fully charged.
- The keyboard goes to sleep mode after 5 minutes of inactivity. If leaving your keyboard for more than an hour, keyboard Power Switch should be set to OFF to save battery life.

TROUBLESHOOTING

If your keyboard does not work after installation, please try the following:

- Make sure you have turned the Power Switch to ON at the side of the keyboard.
- Make sure you have set up Bluetooth connection correctly on your iPad as instructed on Bluetooth Connection Setup (pg. 5,6).
- Make sure that the keyboard is within range of your iPad. Maximum keyboard Bluetooth range is 30 feet.
- Make sure that both your iPad battery and the keyboard battery are fully charged.

⑨

iPad Hotkeys		
Key	Action	Description
	Home Screen	Returns iPad screen to home screen
	Search	Launches iPad search feature
	Copy	Copy text or image
	Paste	Paste text or image
	Slideshow	Launches iPad slideshow feature
	On-Screen Keyboard	Shows or hides iPad on-screen keyboard
	Screenshot	Takes snapshot of screen
	Screen Lock	Deactivates iPad (standby mode) and locks screen
Multimedia Hotkeys		
Key	Action	Description
	Previous Track	Takes you to previous track in multimedia software
	Play/Pause	Plays or pauses track in multimedia software
	Next Track	Takes you to next track in multimedia software
	Mute	Mutes computer main volume
	Volume Down	Decreases computer main volume
	Volume Up	Increases computer main volume

⑧