



Xtream™ S3

Bluetooth® 3.0 Wireless Speaker/Stand



Model: Xtream® S3

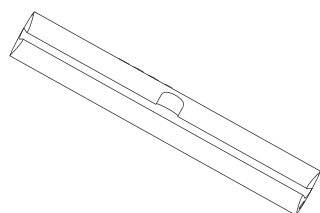
QuickGuide

English

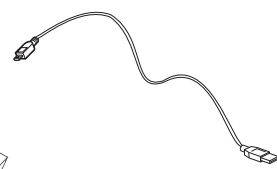
www.adesso.com

①

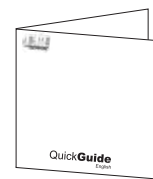
CONTENTS



A
Wireless Speakers



B
Micro USB Cable

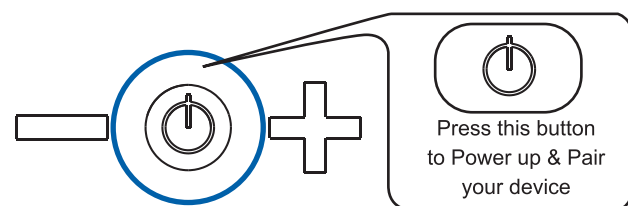


C
Quick Start Guide

Specifications

- Bluetooth® Version: 3.0+EDR
- Bluetooth® Profiles: A2DP, AVCRP, HSP, HFP
- Music Time: 15 hours
- Stand-by Time: Up to 450 hours
- Charging Time: 4~5 hours
- Effective Range: 30' feet
- Talk Time: 20 hours
- Input: DC: 5V/500ma
- Battery: Rechargeable 1800mAH Li-polymer battery
- Dimensions: 10 x 2 3.4"
- Net Weight: 1Lbs

Connect



Function	Button	Period	LED
Pairing	Press & Hold	6 Seconds	RED & BLUE Blink Alternately
Power On	Press & Hold	3 Seconds	BLUE LED is on for 1 Second
Power Off	Press & Hold	6 Seconds	RED LED is on for 1 Second

On an iPhone, iPod or iPad
Go to **SETTINGS > GENERAL >** and enable **BLUETOOTH**

⑦

Limited Warranty

Adesso provides a one year limited warranty for all of its products against defects in material and workmanship.

During this period, Adesso will repair or replace any product which proves to be defective. However, Adesso will not warranty any product which has been subject to improper freight handling, shipping abuse, neglect, improper installation or unauthorized repair. The warranty will not cover products installed with components not approved by Adesso and products where the sealed assembly trace has been broken.

If you discover a defect, Adesso will, at its option, repair or replace the product at no charge to you provided you return it during the warranty period with freight charges pre-paid to Adesso. Before returning any product, you must obtain a Return Merchandise Authorization number (RMA). This RMA # must be clearly marked on the outside of the package you are returning for warranty service. Be certain to also include your name, shipping address (no PO Boxes), telephone number, and a copy of the invoice showing proof of purchase in the package.

Support

We have listed most of our FAQ's (Frequently Asked Questions) at: <http://www.adesso.com/faqs.asp>. Please visit our FAQ Service & Support pages before you contact our E-mail or Telephone Support.

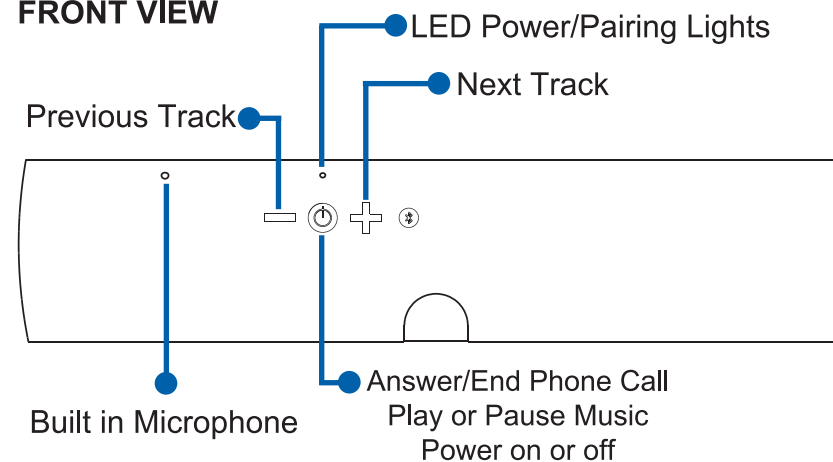
Email Support: If our FAQ's do not help you resolve your issues, please email support@adesso.com

Telephone Support:
Toll Free: (800) 795-6788
9:00AM to 5:00PM PST Monday - Friday

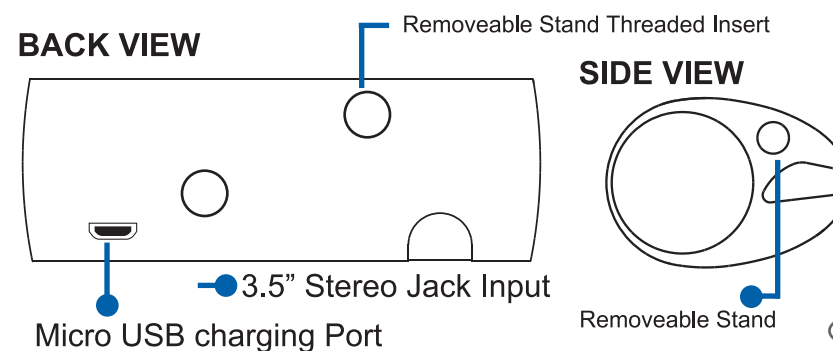
②

Product Overview

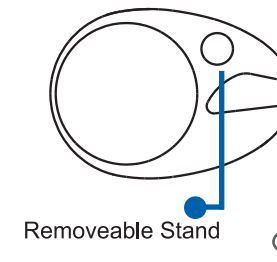
FRONT VIEW



BACK VIEW



SIDE VIEW



④

③

Introduction

The Adesso® Xtream® S3 is designed with flexibility in mind. It doubles as stand for your tablet or smart phone; then can be turned upside down as a set-on-top speaker for your notebook. Not to mention, the Xtream® S3 utilizes Bluetooth 3.0 wireless hands-free audio to go along with deep bass speaker technology for high quality sound that will improve any movie or multimedia experience. Make flawless hands-free phone calls using the integrated wideband microphone. Never run out of Battery with the iOS on-screen meter. Multipoint technology connects up to two devices at the same time.

Regulatory Compliance

FCC Class B Information

This equipment has been tested and found to comply with the limits for a Class B digital device, pursuant to Part 15 of FCC Rules. These limits are designed to provide reasonable protection against harmful interference in a residential installation. However, there is no guarantee that interference will not occur in a particular installation.

CE Compliance for Europe

This equipment has been tested and found to comply with the limits for the European Council Directive on the approximation of the law of the member states relating to electromagnetic compatibility (89/336/EEC) according to EN55022.

③

Multipoint Technology

Multipoint technology allows simultaneous connection to two different devices at the same time. Simply repeat the pairing process on both devices.

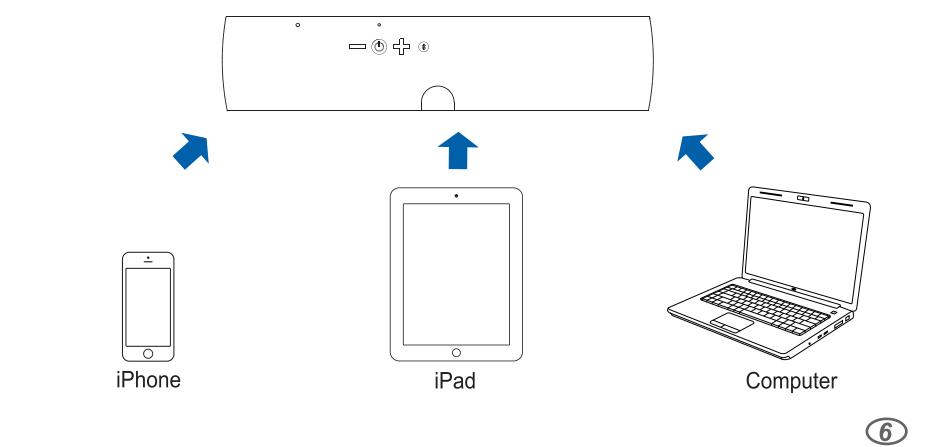
Connection Options

Connect to Xtream H3™ by Bluetooth™ (wirelessly)

OR

Connect to Xtream H3™ via 3.5mm stereo input

(see page 5 for picture)



⑥

Taking Phone Calls

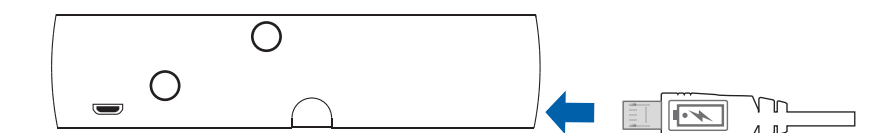
Function	Button
Voice Dial	Press & Hold for 2 second
Redial	Press twice quickly
Volume	Press to increase/decrease the volume
Answer/End Call	Press & Release

Playing Music

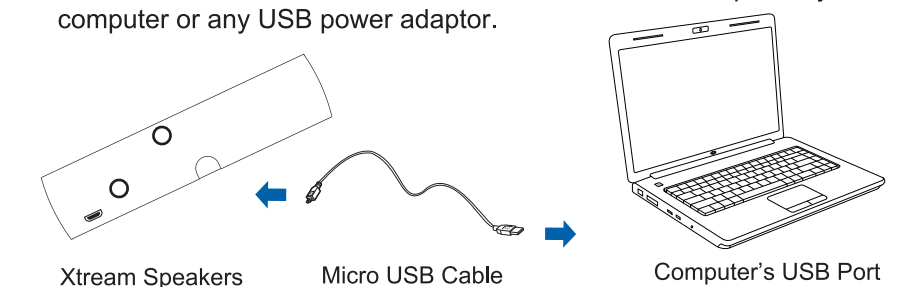
Function	Button
Play	Press & Release
Pause	Press & Release
Volume	Press to increase/decrease the volume

Charging the Battery

a. Insert the Micro USB Charging Cable Connector into the headset micro USB charging port.



b. Insert the USB end of the Micro USB Cable into the USB port of your computer or any USB power adaptor.



LED	Status
RED LED is ON	The Headset is Charging
BLUE LED is ON	The Headset is Fully Charge

OR

⑧

⑧