



2D Barcode Scanner



Model: NuScan 5100U

QuickGuide

English

www.adesso.com

①

LIMITED WARRANTY

ADESSO provides one year limited warranty for the quality of all its products in materials and workmanship.

During this period, ADESSO will repair or replace all merchandise, which proved to be defective. However, ADESSO will not warranty any product which has been subjected to improper freight Handling, shipping abuse, neglect or unauthorized repair or installation. The warranty also will not cover products installed with Non-ADESSO components and product with broken sealed and assembly trace. After replacement of RMA, ADESSO reserves the right to request the total cost of the replacement products with broken seals or assembly trace.

If you discover a defect, Adesso will, at its option, repair or replace the product at no charge to you, provided you return it during the warranty period with transportation charges pre-paid to Adesso. You must contact Adesso at support@adesso.com for a Return Merchandise Authorization number (RMA) prior to returning any product. For each product returned for warranty service, please include your name, shipping address (no P.O. Box), telephone number, copy of the bill of sale as proof of purchase and have the package clearly marked with your RMA number.

SUPPORT

We have listed most of our FAQ's (Frequently Asked Questions) at: <http://www.adesso.com/faqs.asp>. Please visit our FAQ Service & Support pages before you contact our E-mail or Telephone Support.

Email Support: If our FAQ's do not help you resolve your issues, please email support@adesso.com

Telephone Support:
Toll Free: (800) 795-6788
9:00AM to 5:00PM PST Monday - Friday

②

INTRODUCTION

Featuring a 2D scanning engine that can interpret and input data 2-dimensional barcodes such as QR code, PDF417, DataMatrix, and Aztec Code, the NuScan 5100 is a versatile and powerful tool to gather the data your business needs. It has a built-in CCD light source and 752 x 480 CMOS sensor that allows you to scan 1D/ 2D barcode with scan rate of 60 scans per second, all while being accurate and reliable. Simply plug in the NuScan 5100 into the computer and it will automatically install and be ready for use.

SPECIFICATIONS

- Light Source: 630 nm visible LED
- Microprocessor: 32 bit
- Depth of Field: 0 – 18 inches (UPC/EAN 100%, PCS=90%)
- Scan Angle: 34 °
- Scan Rate: 220 scans per second
- Minimum Bar Width: 0.1 mm Code 39, PCS=90%
- Print Contrast: Min. 25% @ UPC/EAN 100%
- Indicators (LED): Green LED
- Alert Operation: Programmable tone & beep time
- Operating Current: 350 mA
- EMC : CE & FCC DOC compliance, VCCI, BSMI
- Dimensions: 6.5" x 2.75" x 2.75" (165 x 68 x 70mm)
- Weight: 0.40 lb (172 g; cable excluded)
- Cable: 6 ft (1.8m)
- Operating Temperature: -20°C ~ 60°C (-4°F ~ 140°F)
- Storage Temperature: -40°C ~ 80°C (-40°F ~ 176°F)
- Humidity: 5% ~ 90% RH (non-condensing)

REQUIREMENTS

- Operating system: Windows 7 and above; Mac OSX 10.4 and above
- Connectivity Interface: USB port

③

CONTENTS



NuScan 5100U



Quick Start Guide

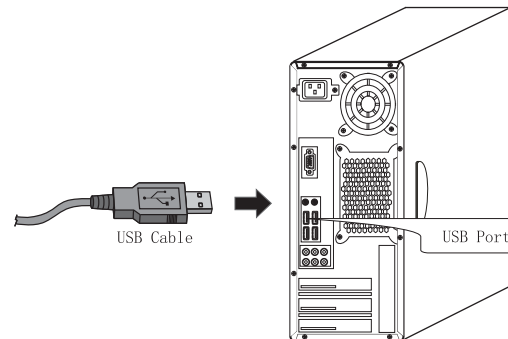
DESCRIPTION



④

INSTALLATION

1. Turn on your computer and let your operating system load completely. Plug in the USB cable to the USB port.



2. Your operating system will detect the device automatically. This device is plug and play, no driver is required.

⑤

USAGE TIP

Do not hold the scanner directly over a barcode at 90°. Scanning light bounces directly back into the scanner from the barcode label is known as specular reflection which will create a "dead zone" where decoding is difficult. So instead of a 90° head-on approach, tilt the scanner up to 60° forward or backward to achieve a successful decode. Practice a few times to find what range of angles works best.

MAINTENANCE

Cleaning the scan window is the only maintenance required. A dirty window may affect scanning accuracy. Wipe the scanner window gently with a lens tissue or other material suitable for cleaning optical material.

Note:

1. To avoid damage to the eyes, do not look directly into the laser beam.
2. POS, or Inventory software is not included, however the scanner works well with all 3rd party software, including MS WORD, Excel and Notepad.
3. For basic set up configurations please our FAQs:
If you need to make changes in the configuration of the scanner for specific applications, a full Programming Guide can be downloaded at:
<http://www.adesso.com/download/user-manual/NuScan5100.pdf>

⑥