



## 21.5" HD Tablet Monitor



Model: CyberTablet™ T22HD

# QuickGuide

English

www.adesso.com

### LIMITED WARRANTY

ADESSO provides one year limited warranty for the quality of all its products in materials and workmanship.

During this period, ADESSO will repair or replace all merchandise, which proved to be defective. However, ADESSO will not warranty any product which has been subjected to improper freight Handling, shipping abuse, neglect or unauthorized repair or installation. The warranty also will not cover products installed with Non-ADESSO components and product with broken sealed and assembly trace. After replacement of RMA, ADESSO reserves the right to request the total cost of the replacement products with broken seals or assembly trace.

If you discover a defect, Adesso will, at its option, repair or replace the product at no charge to you, provided you return it during the warranty period with transportation charges pre-paid to Adesso. You must contact Adesso at support@adesso.com for a Return Merchandise Authorization number (RMA) prior to returning any product. For each product returned for warranty service, please include your name, shipping address (no P.O. Box), telephone number, copy of the bill of sale as proof of purchase and have the package clearly marked with your RMA number.

### SUPPORT

We have listed most of our FAQ's (Frequently Asked Questions) at: <http://www.adesso.com/faqs.asp>. Please visit our FAQ Service & Support pages before you contact our E-mail or Telephone Support.

**Email Support:** If our FAQ's do not help you resolve your issues, please email [support@adesso.com](mailto:support@adesso.com)

**Telephone Support:**  
Toll Free: (800) 795-6788  
9:00AM to 5:00PM PST Monday - Friday

### PACKAGE CONTENTS



### INTRODUCTION

The Adesso Cybertablet T22HD Tablet Monitor features high definition, high resolution and brings you brand new visual experience in HD quality. It integrates an HD screen of 1980 x 1080 pixels with built in pen pressure technology of 2048 levels of pressure sensitivity. Simply connect the Cybertablet T22HD to your computer or notebook, and with the digital stylus pen, drawing is as smooth and as easy as if you were using a pencil and paper. The tablet's stylus pen also acts as a mouse for easy navigation while you create or edit photos. The Adesso Cybertablet T22HD can be used in a classroom as a great visual teaching tool, or as a high end, high quality graphic tablet. Whether as a graphic tablet, or just an HD monitor, you will start to see things a lot clearer with the Adesso Cybertablet T22HD.

### SPECIFICATIONS

#### Monitor

- Product Dimensions: 21" x 12.75" x 1.25" (517 x 322 x 30 mm) (without stand)
- Selectable Working Area: 18.75" x 10.5" (477 x 268 mm)
- Display Resolution: 1920 x 1080 pixels (Best Resolution)
- Report Rate: 0.25 seconds (~14 ms)
- Pixel Pitch: 0.001" x 0.001" (0.25 x 0.25 mm)
- Electrical Interface: Dual Channel LVDS (Low-Voltage Differential Signaling)
- Color Depth: 16.7M Colors & 8 bit depth
- Contrast Ratio: 1000:1
- Backlight Unit: Lower side 1 LED Light Bar
- Brightness: 250 cd / m2
- Viewing Angle: -89°~89° (Horizontal) -89°~89°(Vertical)
- Environmental: Operating Temperature 0°~50° C ; Storage Temperature -20°- 60° C
- Power Consumption: 18.5 Watts
- Power Source: AC-100-240V Universal
- I/O Connectors: DC Power In; VGA 15-pin D-sub input; DVI Input; HDMI Input; USB Port
- USB Cable Length: 6ft
- Certification: FCC, CE, ROHS

### SPECIFICATIONS

#### Digitizer

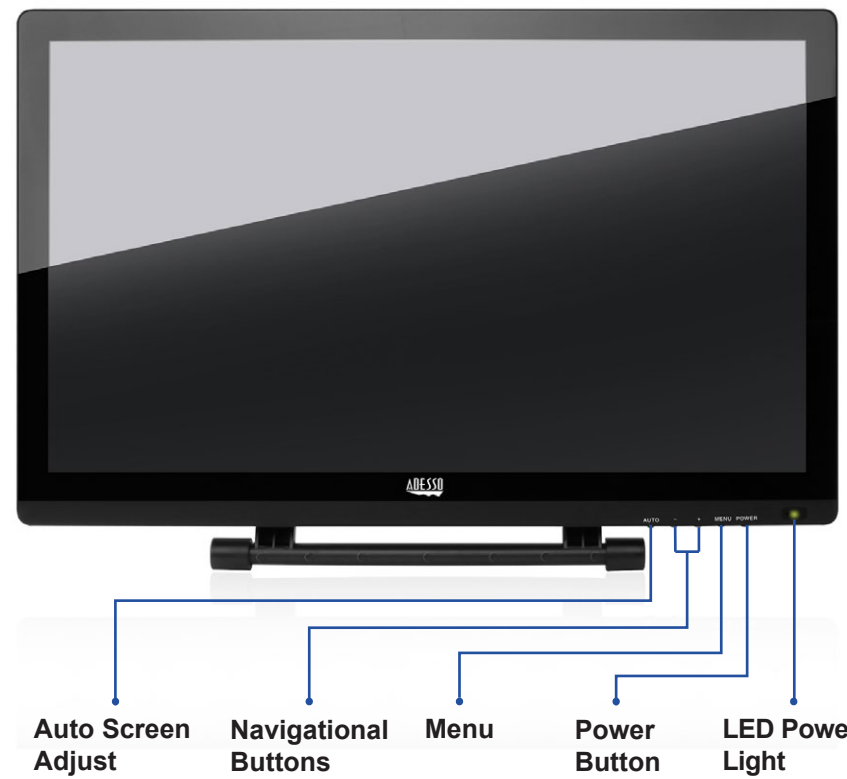
- Technology Used: Electromagnetic
- Pressure Sensitivity: 2048 levels
- Resolution: 5080 LPI
- Accuracy: 0.25mm
- Reading Height: 15mm (Maximum)
- Supply Voltage: +5V (Voltage)
- Power Consumption: 0.05A (Watts) (Maximum)
- USB Interface: USB 1.1 (Minimum)
- Report Rate: 133 reports / per second
- Pen Button: 1. Left (Pen Tip); 2. Right (Barrel Backward); 3. Middle (Barrel Forward)

### REQUIREMENTS

- Operating system: Windows® 7 and above & Mac OS X
- VGA connector for monitor (DVI or HDMI optional); Available USB Port
- CD / DVD ROM for Driver Installation

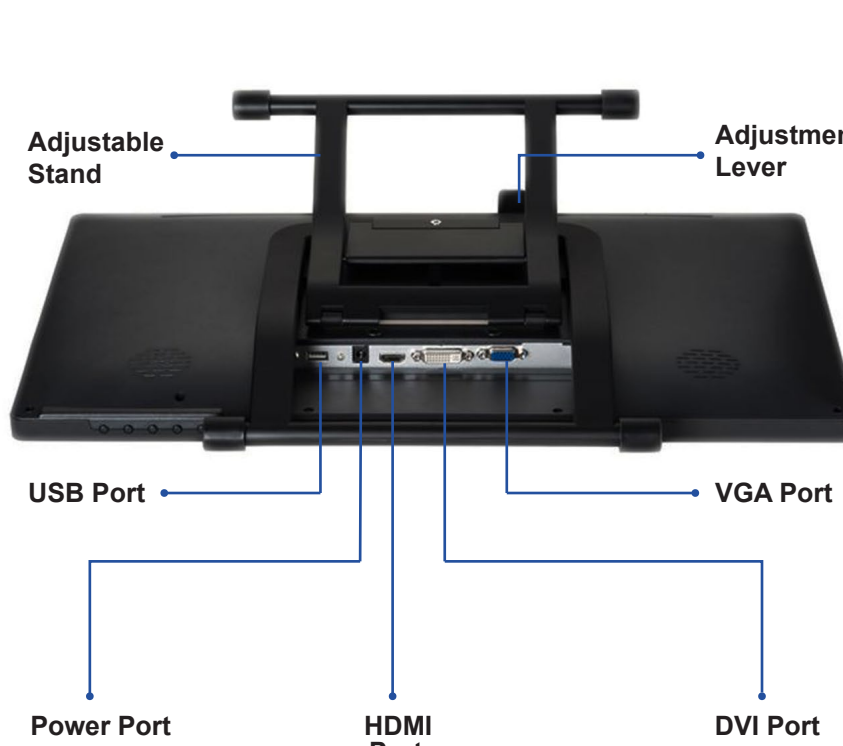
### DESCRIPTION

\* Front View



### DESCRIPTION

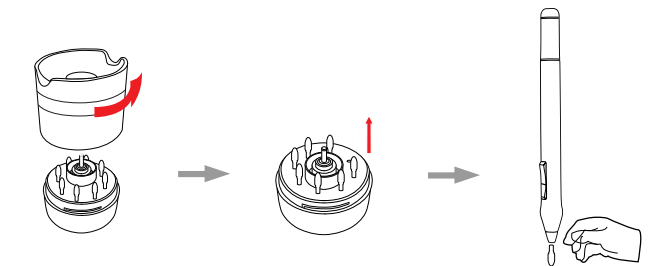
\* Back View



### CHANGING THE PEN TIP

A. Grab the Pen Holder and twist it about 75 degrees counter clockwise. This will remove the top portion of the pen holder and you will then access the additional pen tips and tweezers as shown.

B. Remove the tweezers located in the middle of the compartment and take out a pen tip so you can be ready to replace the worn tip in the pen. With the tweezers, simply pull out the worn pen tip and insert the new pen tip to the pen.



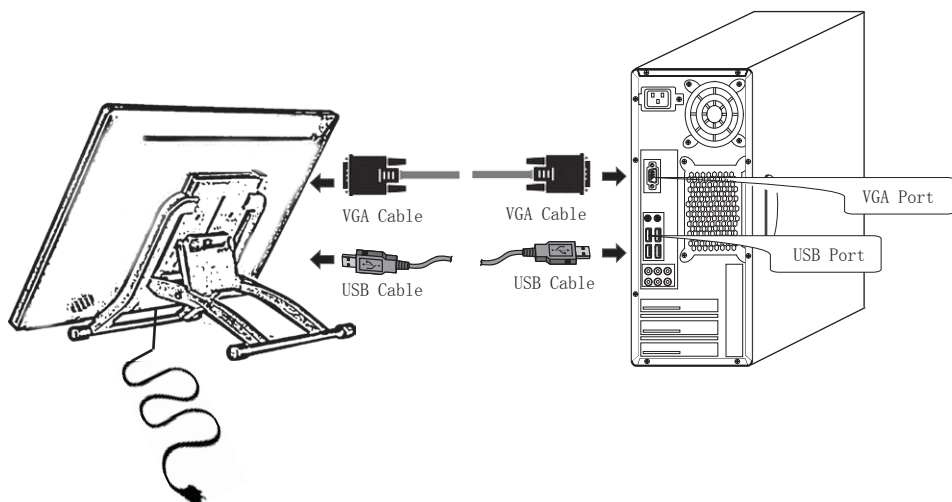
#### Storing the Digital Pen properly

It is recommended to place the pen in a pen holder or store it with the pen tip pointing upward, or place it horizontally with the pen tip free of any other objects.

### INSTALLATION

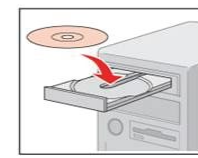
1. To set up your monitor for the first time, plug in the included AC adapter into the monitor's power port, plug one end of the VGA cable into the back of the monitor's VGA port and finally plug in one end of the USB port into the back of the monitor's USB port. (refer to the diagram on page 6 & 7 for the location of these ports)

2. Connect the other end of the provided VGA cable to your computer's VGA port and the other end of the USB cable to the USB port behind your computer. (refer to the diagram below for reference)



### DRIVER INSTALLATION FOR WINDOWS

1. Insert the CyberTablet T22HD Driver CD into your computer's CD-ROM drive for installation. If the software installer menu does not automatically run, please double click on your CD drive's icon and click on the "install.exe" icon and follow the prompts to install the CyberTablet T22HD driver.

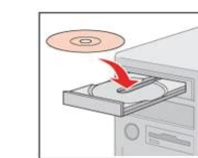


2. Click the "Windows Driver" button and follow the on screen procedure to complete installation. After the driver is installed, click OK and restart your computer.

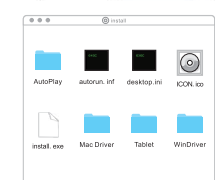


### DRIVER INSTALLATION FOR MAC OS X

1. Insert the CyberTablet T22HD Driver CD into your computer's CD-ROM drive for installation. If the software installer menu does not automatically run, please double click on your "Install CD icon on your desktop and click on the "Mac Driver" folder, where the driver is located. Double click on that and follow the prompts to install the CyberTablet T22HD driver on your Mac computer.



2. Click the "Mac Driver" button and follow the on screen procedure to complete installation. After the driver is installed, click OK and restart your computer. The driver itself will be located in your applications folder named "Touch

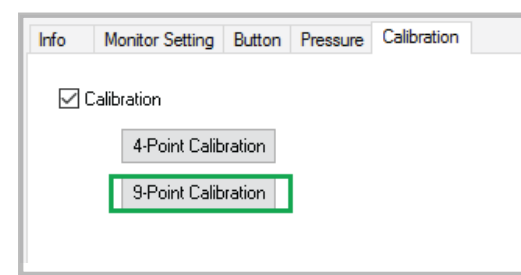


### CALIBRATING YOUR MONITOR

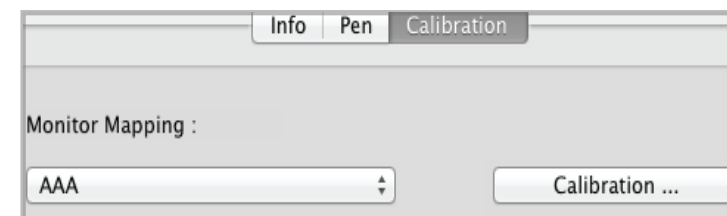
Calibrating your T22HD Monitor is required before you begin using your pen for inking and navigating with your monitor. To calibrate your monitor for the first time, locate the driver icon either in your System tray if you are running Windows, or in your Applications folder if you are running Mac. The driver icon looks like this:

1. Double click on the driver icon and the menu below will appear with different tabs to choose from.
2. Click on the "Calibration" tab for either Windows or Mac (Check the box "Calibration" if you are running Windows as shown below)
3. Once you have done that, click on "9-Point Calibration" or simply "Calibration" and follow the on-screen instructions.

\* Windows Driver Menu



\* Mac Driver Menu



### NOTE:

1. If you have used Graphic Tablets in the past, make sure you completely remove their drivers and restart your system before installing the CyberTablet T22HD driver. The driver is needed for advanced controls and functions, however, you can still use the CyberTablet T22HD Monitor without the driver and simply use as an HD monitor without additional tablet or inking features.

2. For the complete and detailed User Manual on the driver settings for the pen and using the Monitor in tablet mode, please download from the link below. This will answer all your questions in regards to pen pressure, customizing the pen buttons, monitor calibration and navigating through the driver's menu.  
[http://www.adesso.com/productmanuals/CybertabletT22HD\\_User\\_Manual.zip](http://www.adesso.com/productmanuals/CybertabletT22HD_User_Manual.zip)

### SOFTWARE:

1. Included is an index card with a link to download the Art Rage Lite software. Please register at <https://members.artrage.com/> and refer to this link in regards to registering your copy of Art Rage Lite with included serial number-  
<https://www.artrage.com/faqs/register-artrage/>