



iMouse M30 2.4GHz RF Wireless Mouse



Model: iMouse M30
QuickGuide
English
www.adesso.com

①

LIMITED WARRANTY

Adesso provides a one year limited warranty for all of its products against defects in material and workmanship.

During this period, Adesso will repair or replace any product which proves to be defective. However, Adesso will not warranty any product which has been subject to improper freight handling, shipping abuse, neglect, improper installation or unauthorized repair. The warranty will not cover products installed with components not approved by Adesso and products where the sealed assembly trace has been broken.

If you discover a defect, Adesso will, at its option, repair or replace the product at no charge to you provided you return it during the warranty period with freight charges pre-paid to Adesso. Before returning any product, you must obtain a Return Merchandise Authorization number (RMA). This RMA # must be clearly marked on the outside of the package you are returning for warranty service. Be certain to also include your name, shipping address (no PO Boxes), telephone number, and a copy of the invoice showing proof of purchase in the package.

SUPPORT

We have listed most of our FAQ's (Frequently Asked Questions) at: <http://www.adesso.com/faqs.asp>. Please visit our FAQ Service & Support pages before you contact our E-mail or Telephone Support.

Email Support: If our FAQ's do not help you resolve your issues, please email support@adesso.com.

Telephone Support:
Toll Free: (800) 795-6788
9:00AM to 5:00PM PST Monday - Friday

②

INTRODUCTION

The Adesso 2.4 GHz Radio Frequency wireless iMouse M30 offers you 30 feet of wireless freedom and eliminates the constraints wired mices often cause. This wireless mouse not only provides a comfortable low profile sleek design but also equips with optical infrared sensor offering more sensitive and accurate response than traditional optical mouse.

SPECIFICATIONS

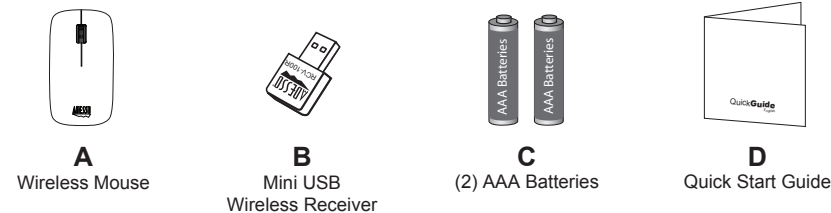
- Tracking Method: Optical Sensor
- Connectivity: 2.4 GHz Radio Frequency Wireless Technology
- Wireless Range: Up to 30 ft. (10m)
- DPI Resolution: 1000
- Features: Scroll Wheel, Auto Sleep Mode, Power Switch
- Indicator: Low Battery
- Hand Orientation: Both
- Power: (2) AAA Batteries
- Dimensions: 4.4 x 2.4 x 1.1" (111 x 60 x 28 mm)

REQUIREMENTS

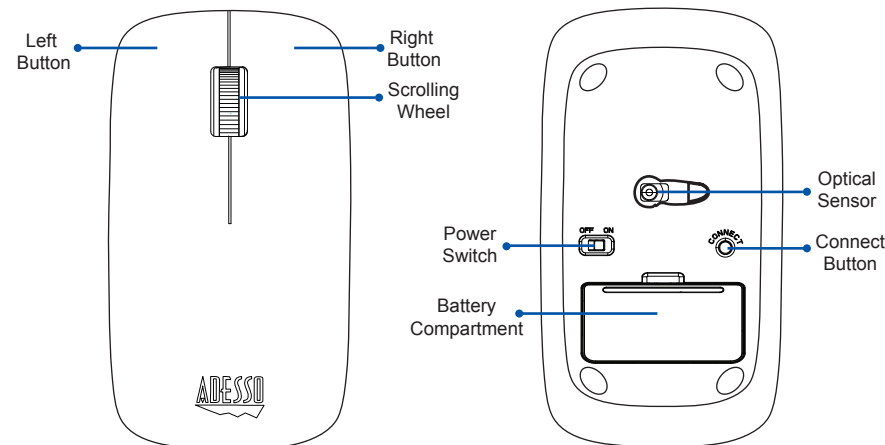
- Operating System: Windows® 8, 7, Vista, XP & 2000
Mac® OS X & below
- Connectivity Interface: USB Port for Mini USB Wireless Receiver

③

CONTENTS



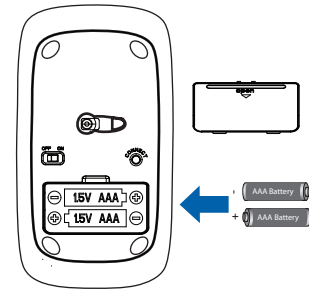
DESCRIPTION



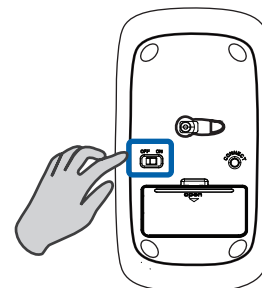
④

INSTALLATION

1. Remove battery cover from mouse battery compartment and insert (2) AAA batteries into device. Close the battery compartment cover.

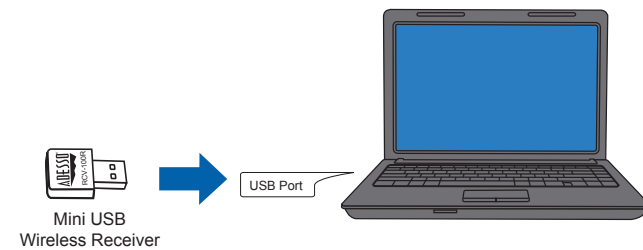


2. Turn the power switch to **ON**.



⑤

3. Plug the Mini USB Wireless Receiver into your computer's available USB port.



4. Your computer's operating system will automatically detect and connect the device (this device is plug and play, no driver is required). Your mouse is now ready for use.

TROUBLESHOOTING:

If the connection fails, review the following steps:

1. Ensure the (2) batteries are inserted properly in the battery compartment.
2. Ensure the computer power is ON and let operating system load completely.
3. Ensure the Mini USB Wireless Receiver is plugged into the USB port of your computer correctly.
4. Ensure mouse Power Switch is set to "ON".
5. Press the "CONNECT" button for 1 second then release.

⑥