



iMouse G25 Wireless Ergonomic Mouse



Model: iMouse G25

QuickGuide English

www.adesso.com

①

LIMITED WARRANTY

Adesso provides a one year limited warranty for all of its products against defects in material and workmanship.

During this period, Adesso will repair or replace any product which proves to be defective. However, Adesso will not warranty any product which has been subject to improper freight handling, shipping abuse, neglect, improper installation or unauthorized repair. The warranty will not cover products installed with components not approved by Adesso and products where the sealed assembly trace has been broken.

If you discover a defect, Adesso will, at its option, repair or replace the product at no charge to you provided you return it during the warranty period with freight charges pre-paid to Adesso. Before returning any product, you must obtain a Return Merchandise Authorization number (RMA). This RMA # must be clearly marked on the outside of the package you are returning for warranty service. Be certain to also include your name, shipping address (no PO Boxes), telephone number, and a copy of the invoice showing proof of purchase in the package.

SUPPORT

We have listed most of our FAQ's (Frequently Asked Questions) at <http://www.adesso.com/faqs.asp>. Please visit our FAQ Service & you contact our E-mail or Telephone Support.

Email Support: If our FAQ's do not help you resolve your issue, please email support@adesso.com.

Telephone Support:
Toll Free: (800) 795-6788
9:00AM to 5:00PM PST Monday - Friday

②

INTRODUCTION

Experience new levels of productivity with the Adesso iMouse G25 Wireless Ergonomic Laser Mouse. This 2.4 GHz Radio Frequency wireless mouse offers you 30 feet of wireless freedom and eliminates the constraints wired mice often cause. Its laser sensor tracking method lets you work on any surface with better speed and accuracy. In addition, the iMouse G25 includes three distinct levels of DPI resolution (400, 800 & 1200) for precise targeting (400 DPI), quick response (800 DPI) or fast maneuvers (1200 DPI). Easily switch between these DPI resolutions with the DPI Switch button located on the top of mouse. All these features, along with its ergonomic design, provide great control, response and comfort with minimal hand movement.

SPECIFICATIONS

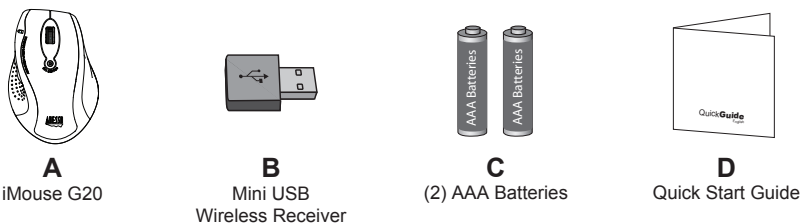
- Tracking Method: Laser Sensor
- Connectivity: 2.4 GHz Radio Frequency Wireless Technology
- Range: Up to 30 ft.
- Maximum DPI: 1200
- Adjustable DPI: 3 Levels - 400, 800 & 1200
- Features: Scroll Wheel, Auto Sleep Mode & (2) Internet Navigation Buttons
- Hand Orientation: Right
- Microswitch Lifecycle: One Million
- Power: (2) AAA Batteries

REQUIREMENTS

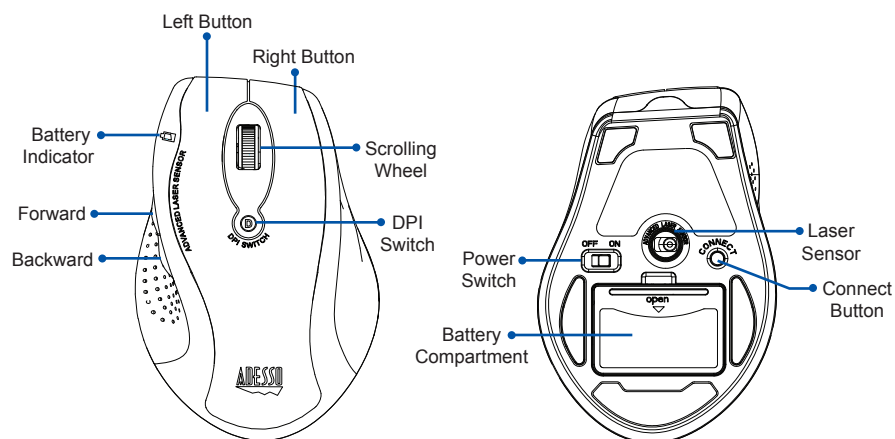
- Operating System: Windows® 8/ 7/ Vista/ XP/ 2000
- Connectivity Interface: USB port for Mini USB Wireless Receiver

③

CONTENTS



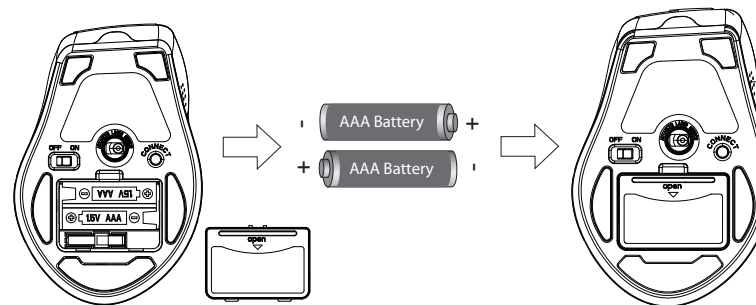
DESCRIPTIONS



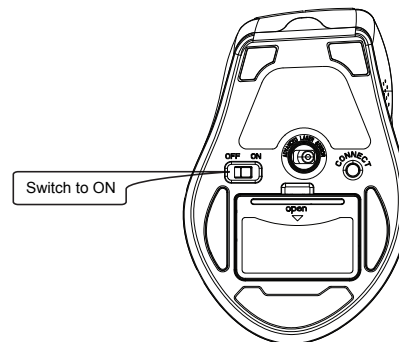
④

INSTALLATION

1. Remove battery cover from mouse battery compartment and insert (2) AAA batteries into device. Close the battery compartment cover.

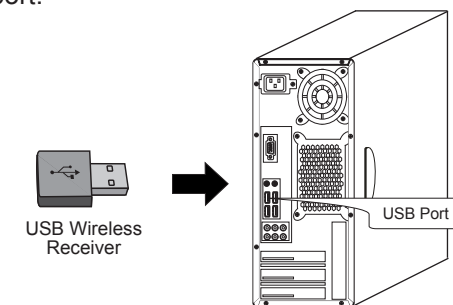


2. Turn the power switch to ON.



⑤

3. Plug the Mini USB Wireless Receiver into your computer's available USB port.



4. Your computer's operating system will automatically detect and connect the device (this device is plug and play, no driver is required). Your mouse is now ready for use.

TROUBLESHOOTING:

If the connection fails, review steps below:

1. Ensure the (2) batteries are inserted properly in the battery compartment.
2. Ensure computer power is On and that Windows® operation system has load completely.
3. Ensure the Mini USB Wireless Receiver is plugged into the USB port of your computer correctly.
4. Ensure mouse Power Switch is set to "ON".
5. Press the "CONNECT" button for 1 second then release.

⑥