

Quick Start Guide

Cyber Tablet 8600/CT-8600A

Introduction

This USB Tablet provides you with excellent writing and drawing convenience, making it easier for you to interact with your PC or Mac and be very creative. To make the best use of this USB Tablet, please read this manual carefully.

- 16 function keys
- Quick and easy for users to select tablet functions.

Features

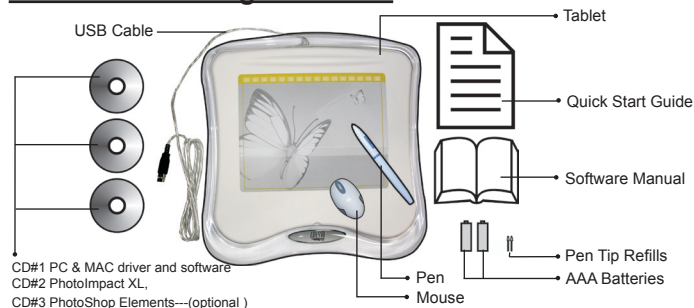
- **High-quality handwriting resolution**
Large area tablet gives higher resolution.
- **Wireless pen**
Convenient for handwriting input.
- **Mouse**
Wireless Mouse handles your everyday mouse tasks such as Double-Clicking Icons, Selecting Menus and much more with ease.

Safety Notice

- Avoid** Dampening the product
- Using volatile chemicals to clean the product
 - Dropping the product off the table or to the ground
 - Severe impact or vibration
 - Stepping on the product
 - Placing heavy objects on the product
 - Disassembling the product
 - Placing the product close to a CRT monitor*
* may cause interference to the monitor

If any problems are occurred, please contact your dealer. Please do not attempt to disassemble this product by yourself.

Check Your Package Contents

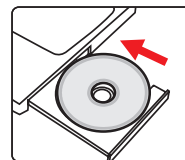


Chapter 1: Installation

Software

Installation procedure:

Insert the installation CD into your CD-ROM drive. After the setup appears, click on the first item to install. Follow the on-screen instructions to complete the installation.



Note:

If the installation does not start automatically, it may be manually started by double-clicking on: [My Computer] → [CD-ROM Drive] → [Setup.exe].

Hardware

Step 1 Connecting the tablet to your PC or MAC

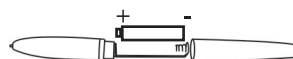
Plug the USB cable into the USB port of your PC or Mac, and a tablet icon will appear in the system tray.

Step 2 Checking the powerindicator

Check the LED indicator on the tablet. If the indicator light is flashing green, then your tablet is successfully powered.

Step 3 Installing the battery

Unscrew the pen cap and insert one AAA battery into the battery compartment, positioning the + and - ends as shown below. Then replace the cap.



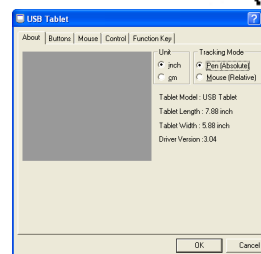
Note:

1. The battery life span is around one year.
2. If the pen tip is worn out after long period of usage, please use the tweezers provided to pull out the old pen tip and install a new one.

Chapter 2: Getting Started

Step 1

Click on the tablet icon in the bottom-right system tray. (The tablet icon will appear when the USB cable is plugged in.)



Step 2

Check the LED indicator on the tablet. If the indicator light is flashing green, then your tablet is successfully powered.

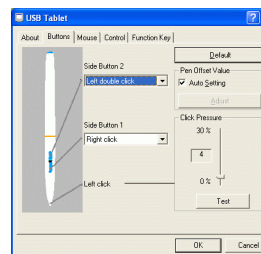
Using the Pen

Side buttons

Click on the "Buttons" tab to customize side buttons.

Default settings

- Side Button 1 = right click
- Side Button 2 = double-click
- The Pen Point = left click



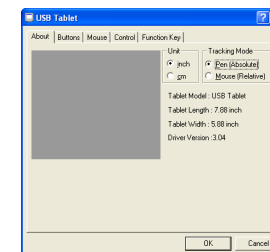
Click Pressure

Move the slider up and down to adjust the pen pressure. You can also press "Test" to set the value for pen tip pressure.

Mouse

The pen is used as a normal handwriting pen or mouse. To change mode, select "Pen" or "Mouse".

⚠ Please put your pen on the hollow area of the tablet while idle. If you place the pen on the tablet, the mouse may be seriously affected.



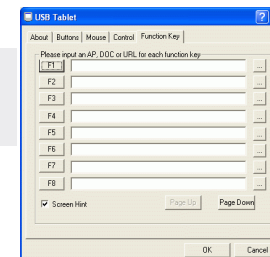
Using the Tablet

Select the function

Your tablet offers default settings for function keys (shortcut keys). To bring up the configuration window, click on the tablet icon in the system tray.

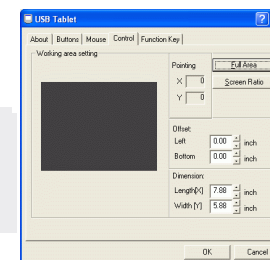
Steps

1. Click the Function Key icon on the tool bar.
2. Browse or key in the path of URL.
3. Click "OK".



Adjusting the workspace

The workspace of your tablet is proportional to the size of the screen. To reduce the scope of the workspace, click "Control" and customize the size to suit your requirement.



Specifications

Active area (W x D)	8" x 6" (203x152mm)
Physical size (W x D x H)	13.4" x 13.2" x 0.8" (342 x 336 x 22 mm)
Technology	Wireless Electromagnetic
Power Consumption	0.35 watts (70mA)
Power Supply	USB port (DV +/- 5% V regulated)
Weight	2.3 lbs. (1067g)
Resolution	Max. 3048 LPI / 120 LPM
Accuracy (overall with pen)	0.42mm
Max. Pressure Level	512 levels
Maximum reading height	0.32" (8mm)
Communication interface	USB BUS
Cable length	5 Feet (1.5 Meters)
Connector	USB Plug
Pen	Power Pen 3 (2 buttons stylus, AAA battery x 1)
Pen Current Consumption	0.08mA (about 12 months / per battery)
Mouse	Mouse 3 (3 buttons / AAA Battery x 1)
Mouse Current Consumption	0.08mA (about 12 months / per battery)
Certification	FCC, CE, VCCI, BSMI, C-TICK